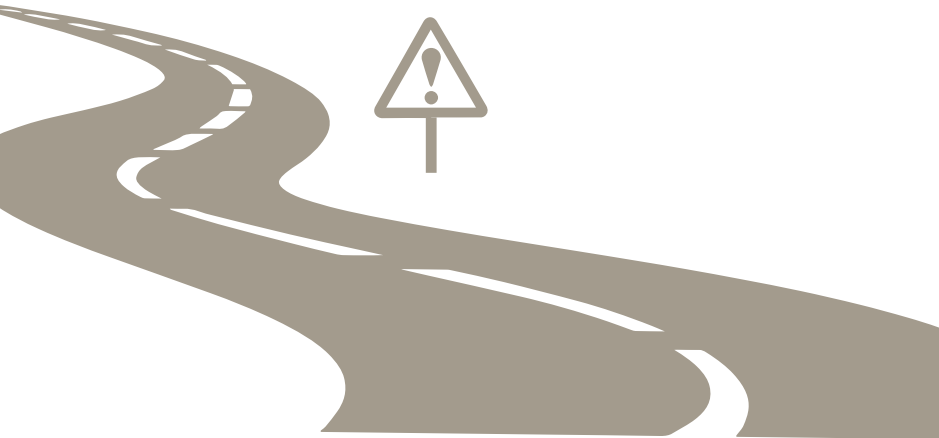


driverscore

- Identify and eradicate negative driving behaviour traits within your fleet
- Reduce insurance premiums by over 20%
- Improve fuel efficiency by as much as 15%



Driving style influences the risk profile of your fleet, but it will also have a major impact on fuel consumption, carbon emissions and vehicle wear and tear.

Regular feedback to drivers encourages a shift from negative behaviours to a more positive style, with tangible results.



REDUCED INSURANCE
PREMIUMS

By analysing driving style across several key risk parameters, Driver Score highlights individuals who are more likely to be involved in an accident. Gradual improvement of these scores will reduce risk and in turn result in significant savings on fleet insurance premiums.



IMPROVE FUEL EFFICIENCY

Dangerous driving is an expensive way to drive with speeding and harsh acceleration burning unnecessary fuel, whilst excessive braking reduces the life of tyres and brakes. Improvements in driver behaviour have saved fleets in excess of 15% on fuel use and significant savings on vehicle maintenance.



DRIVER TRAINING

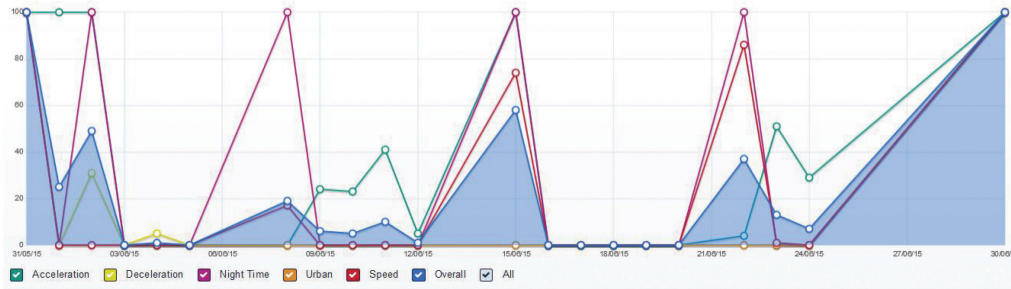
A liveried fleet is an extension of a company's brand and image. Driver Score is an essential tool to educate drivers, developing their driving ability while making them a safer, conscientious and efficient asset to the fleet operation.

Vehicle Score

CREATED JUST NOW GROUP DRIVER SCORE DEMO VEHICLES 15 START DATE 01/06/2015 00:00:00 END DATE 30/06/2015 23:59:00

Save Edit

Showing Data For Vehicle AD31PUK



Data is presented in a visual format designed to facilitate the delivery of driver behaviour in the simplest way. Coupled with a robust driver feedback mechanism, an upward trend in scoring should be seen over time which means that the fleet is responding positively.

The entire fleet can be compared in a league table format, ranking drivers in overall score order, or by scores in individual areas such as speeding. This information can be exported as a PDF / CSV or schedules to run on a regular automated basis to a list of subscribed parties.

VEHICLE	DISTANCE	ACCELERATION	DECELERATION	NIGHT TIME	URBAN	SPEED	OVERALL
6369 DK60 OPN	1001.19 miles	98	93	100	0	97	91
6376 FP53 NPO	366.51 miles	96	96	97	0	95	91
3521 FG63 PON*	21235.42 miles	99	99	90	89	65	88
6556 LJ14 FGH	1022.25 miles	78	65	100	0	96	78
6386 FJ06 HGF	1432.92 miles	95	47	99	0	86	74
3527 FG63 DHB*	1176.74 miles	89	58	61	0	89	71
BF13FWK 3516 767 - LTD	1449.35 miles	87	87	0	0	92	70
BF13EHK 616556 - LTD	979.52 miles	94	64	0	0	17	46
BD140EL 961594 - LTD	2417.77 miles	32	50	42	28	0	30
NA62ULV 636782 - LTD	3206.92 miles	52	52	0	37	0	30
BD63YHN 236739	653.93 miles	27	0	16	0	62	24

Marshall Leasing Ltd, Bridge House, Orchard Lane,
Huntingdon, Cambridgeshire, PE29 3QT

T: 01480 414541

E: info@marshall-leasing.co.uk

Specification

Key Features

- View individual and whole fleet scores
- Recognised by leading insurers as a risk reduction tool
- Bespoke scoring algorithms which can monitor;
 - Harsh acceleration
 - Harsh braking
 - Speeding
 - Urban driving
 - Night time driving
- Automated scheduled reports to run daily, weekly or monthly
- Export scores to PDF / CSV